

DETAIL "C"
Scale 1" = 20'

LOCATION DETAIL
Scale 1" = 20'

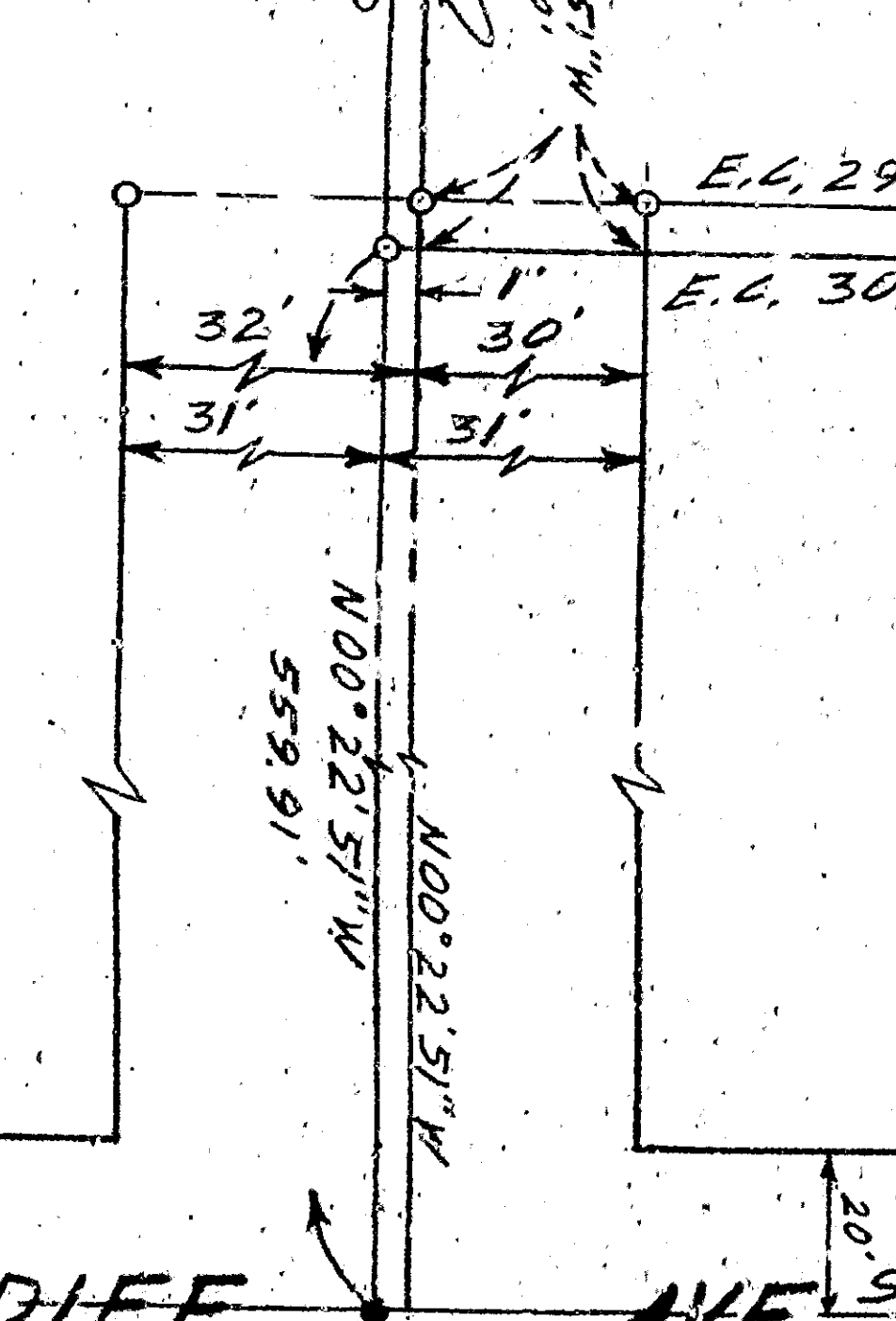
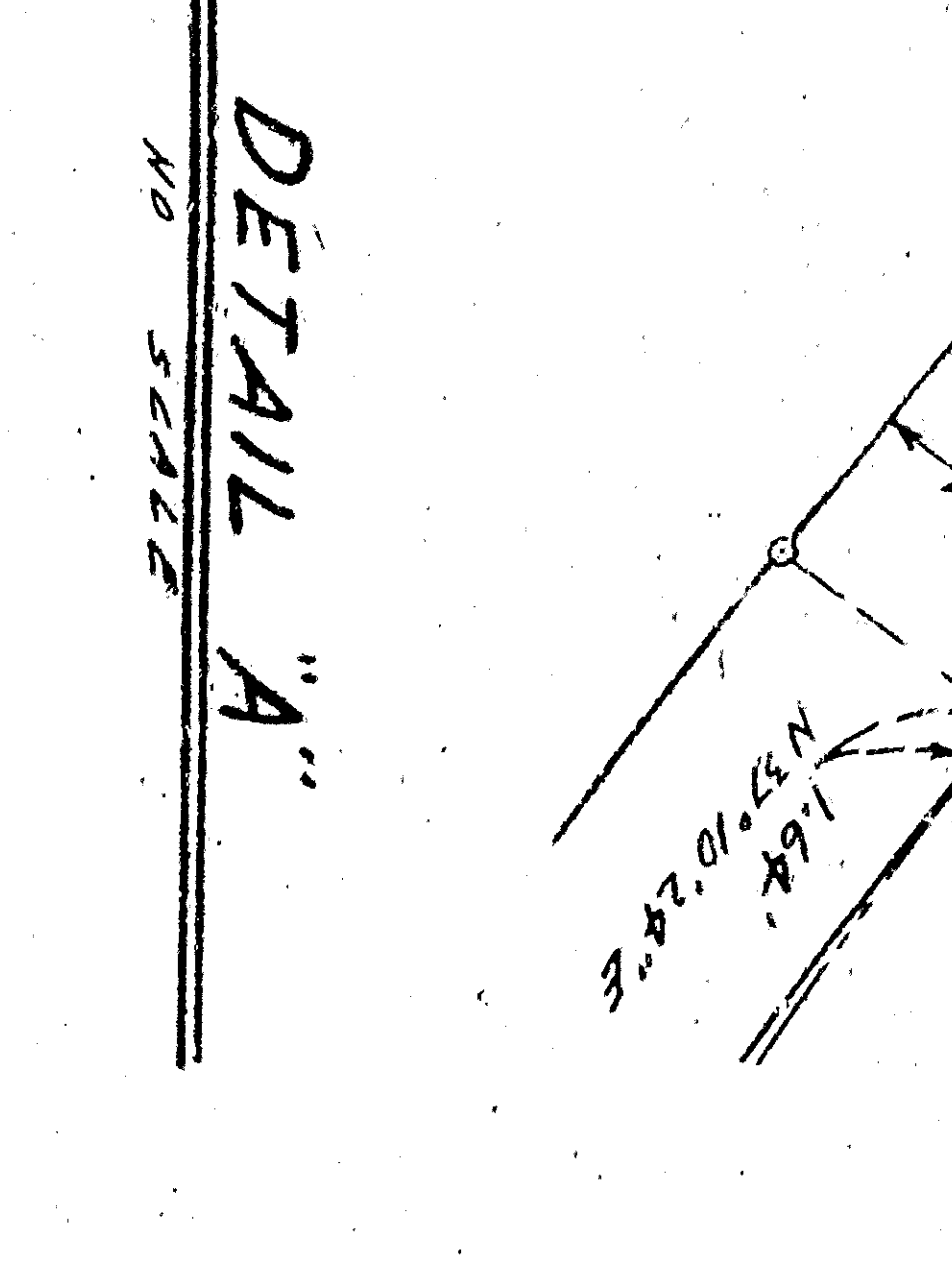
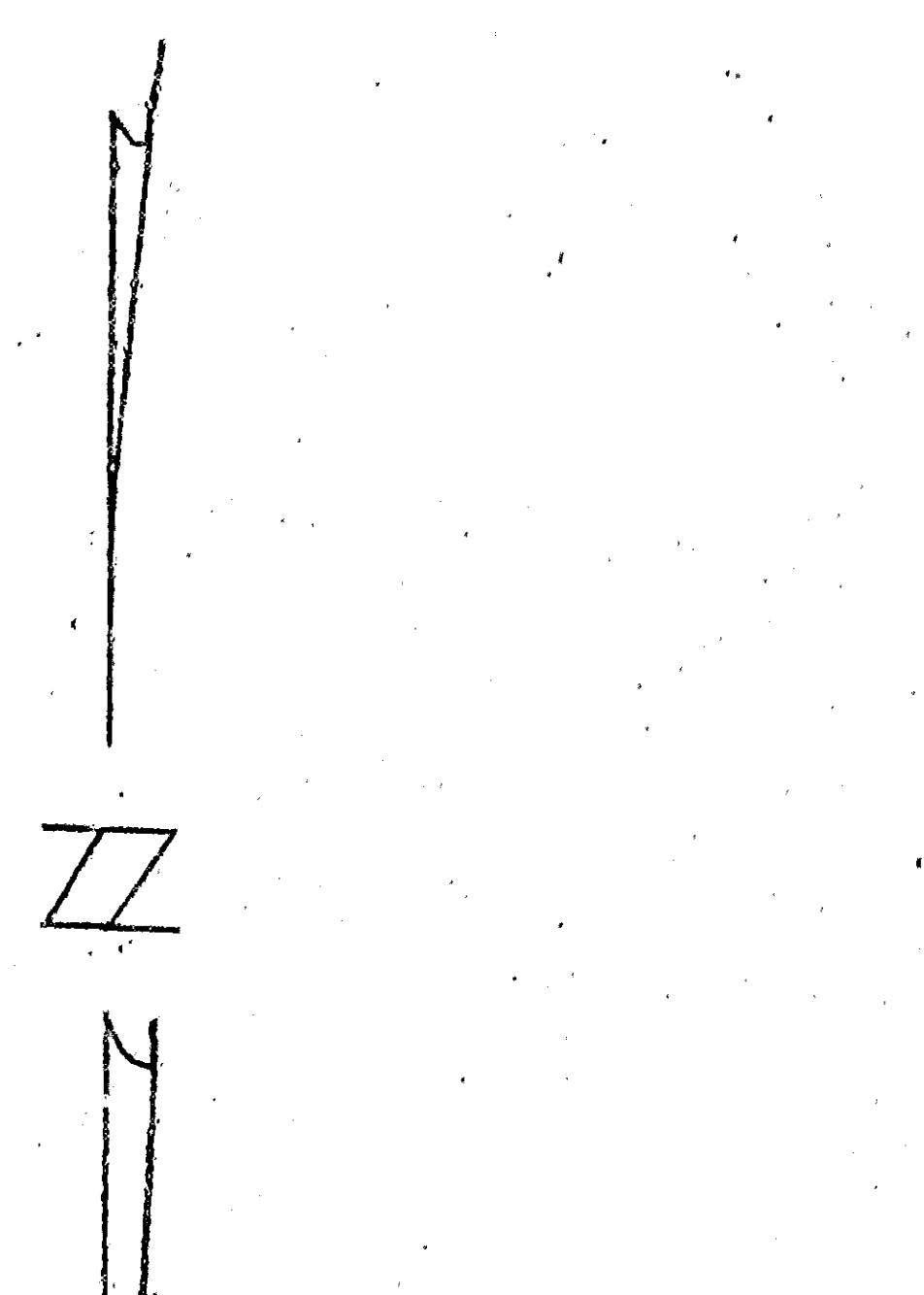
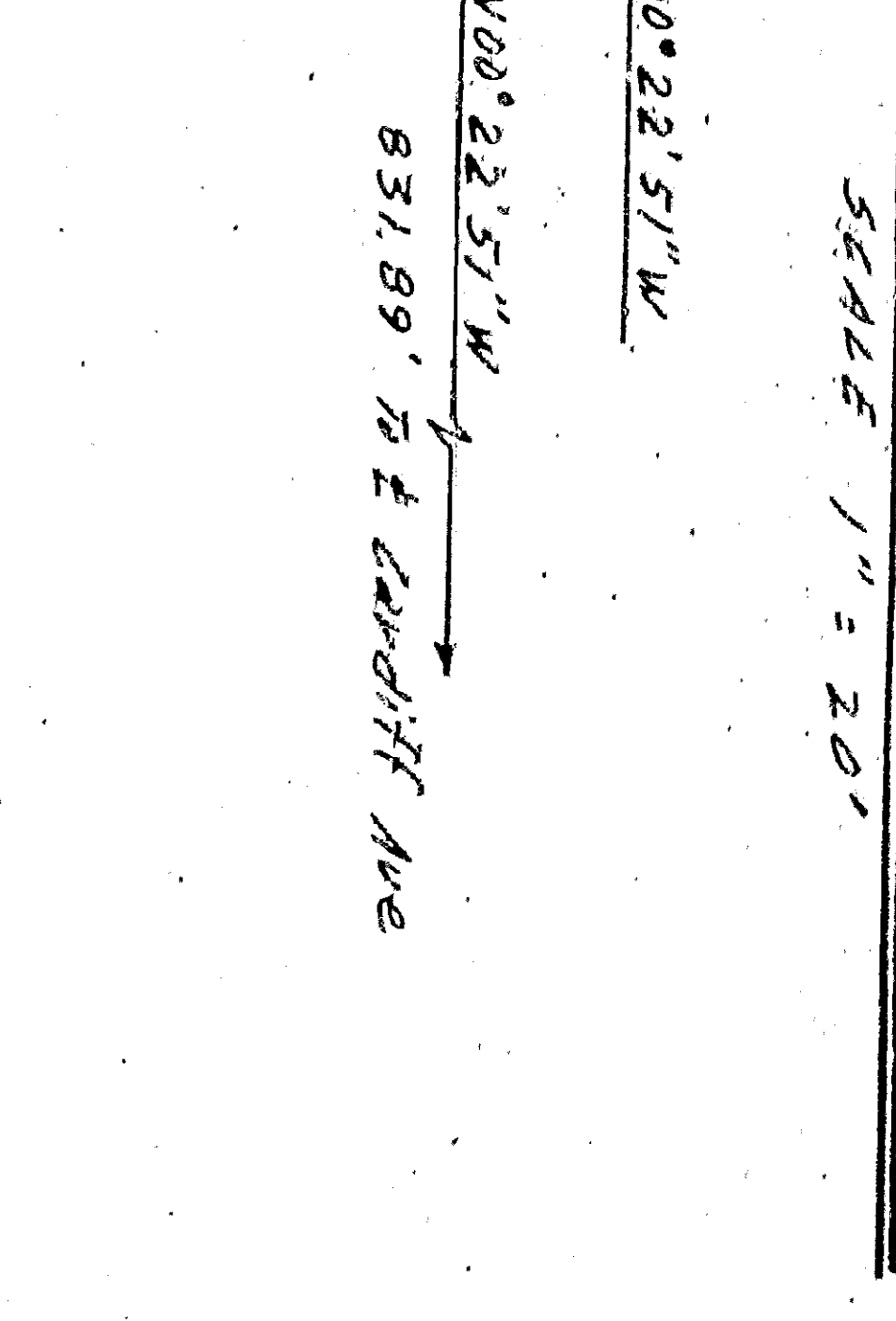
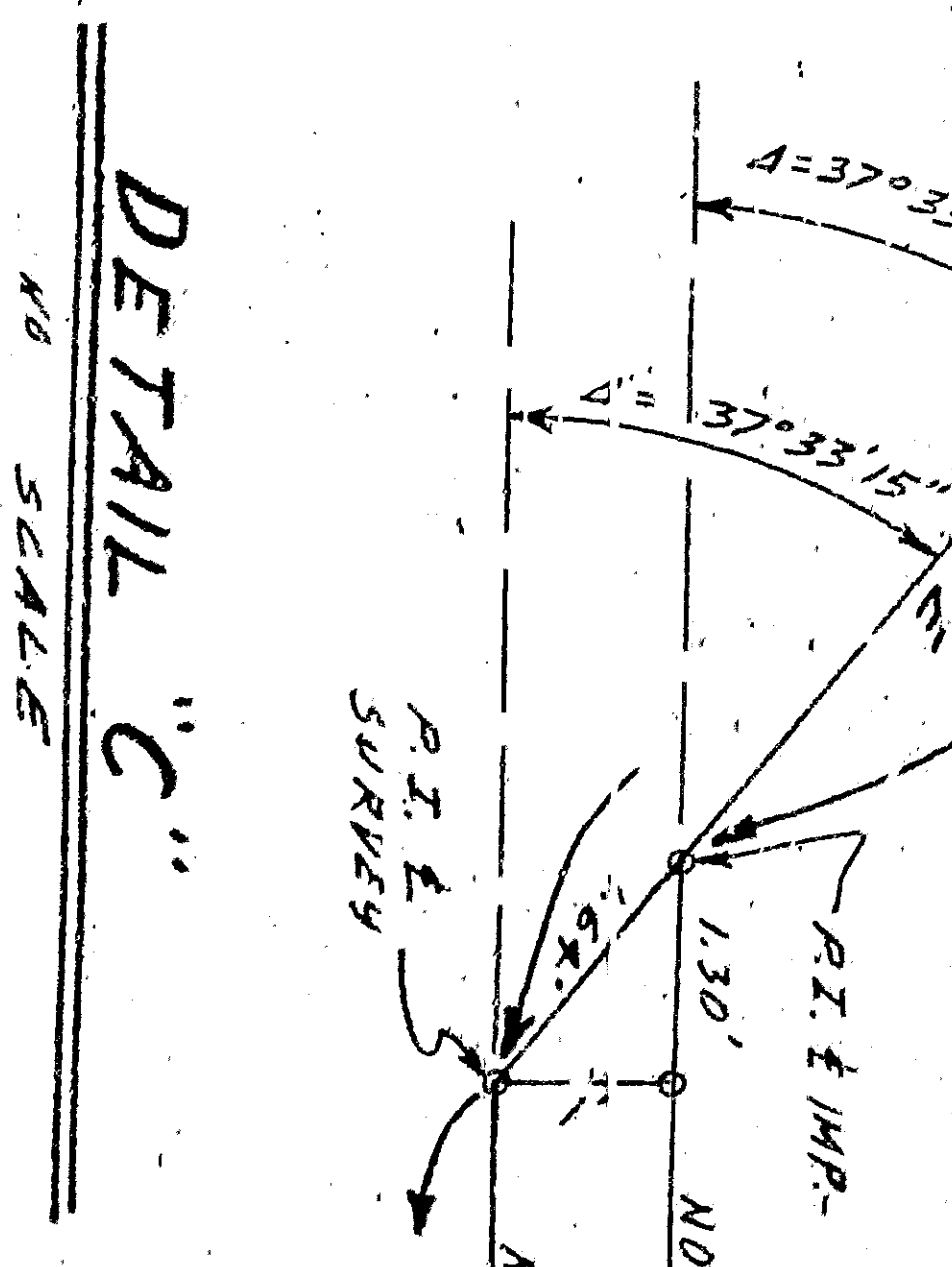
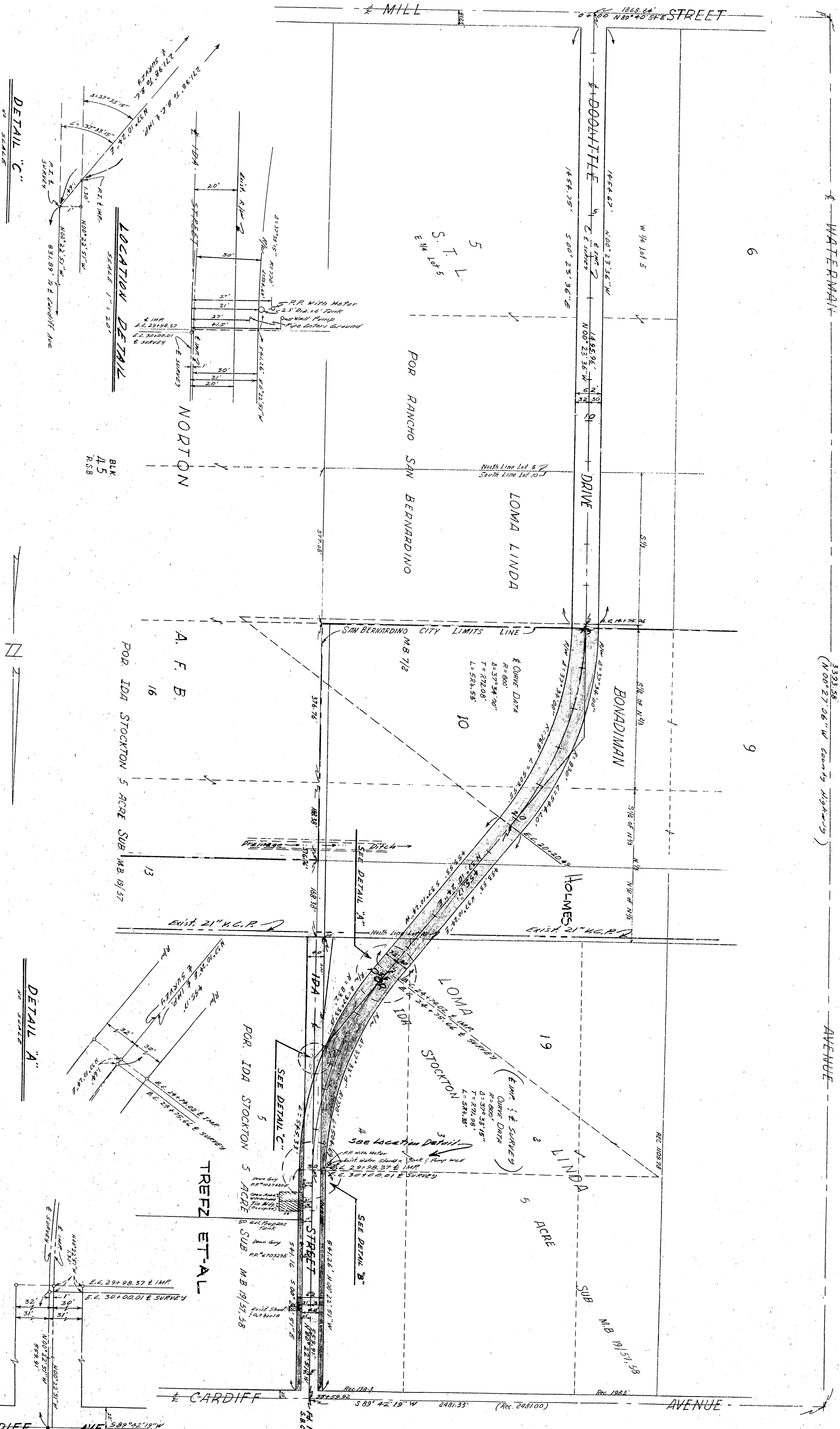
DETAIL "A"
Scale 1" = 100'

DETAIL "B"
Scale 1" = 100'

Basis of Bearing: N0°27'06"W & Waterman Ave.
 For F.A.S. 712 (V.E.I.) Waterman Ave. Imp. Map.
 Map on file at the Office of the San Bernardino County Highway Dept.

REV. NO.	DESCRIPTION	DATE	BY	APPROVED
1	Added Location Detail and Notes	1-25-57	JLN	
	REVISION			

APPROVED: [Signature] REGISTERED CIVIL ENGINEER NO. 13553 DRAWING NO. 35759 SHEET 1 OF 1 SHEET	DEPARTMENT OF ENGINEERING CITY OF SAN BERNARDINO RIGHT OF WAY MAP DOOLITTLE DRIVE MILL STREET TO CARDIFF AVENUE
---	---



Basis of Bearing: N00°27'06"W & Waterman Ave.
 For F.A.S. 712 (V.E.I) Waterman Ave. Trp. 91A
 Map on File at the Office of the San
 Bernardino County Highway Dept.

Scale: 1"=100'

REV. NO.	1	Added Location Detail and Notes	DATE	1-25-57
REV. NO.	2	REVISION	DATE	1-25-57

APPROVED	1-25-57	1957
DRAWING NO.	35759	REGISTERED CIVIL ENGINEER NO. 13153
DESIGNED BY	W. J. ...	CHECKED BY
CITY OF SAN BERNARDINO		
RIGHT OF WAY MAP		
Doolittle Drive		
MILL STREET TO CARDIFF AVENUE		